



A Case Study  
**Hard Shoulders**



Project Details

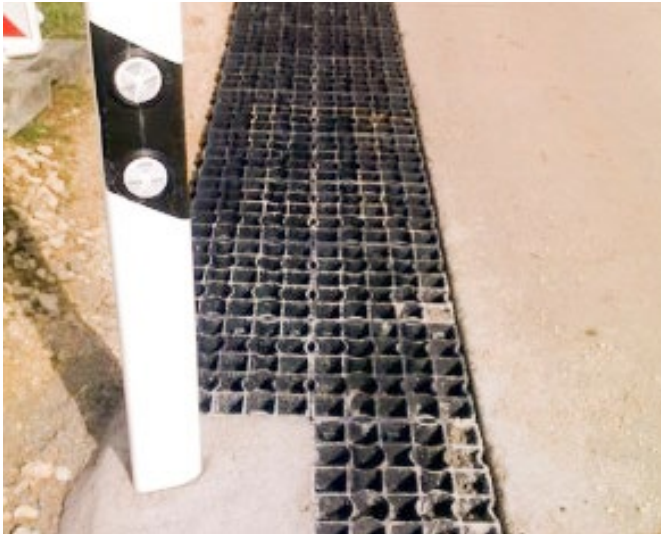
EcoGrid used to reinforce hard shoulders on roadways

Client Details

Various

Contractor Details

Competent civil engineers



Shoulders are constructed next to rigid and flexible pavements to provide space for vehicles during an emergency, provide structural support for the roadway itself, thus increasing road safety. Shoulders can be paved or unpaved. Rutting and pavement edge drop-offs are common performance problems associated with granular shoulders, primarily caused by bearing capacity failure of the sub grade, vehicle-induced wind erosion, or vehicle off-tracking.

Edge drop-offs develop by surface runoff erosion, being hazardous to drivers and difficult to maintain, such problems require more attention. These situations are typically repaired and mitigated by placing more material, grading and compacting it. However, such a solution is considered temporary and does not address the factors causing the problem; therefore, the problem often recurs.

To accommodate heavy truck loads, EcoGrid can be used as reinforcement to stabilise. EcoGrid is the original flexible porous plastic paving, designed and manufactured in Germany and also known as a Geo grid, Geo cell or Ecoraster. Our product is proudly produced by Purus Plastics GmbH and considering over 20 years of manufacture, we can guarantee 20 years of quality shoulder stabilisation in most of environmental conditions. Feel free to browse through our website or contact us for more info.



[sales@ecogrid.co.uk](mailto:sales@ecogrid.co.uk) | 0151 639 4281 | [ecogrid.co.uk](http://ecogrid.co.uk)

Crystal House, 28-29 Wheatland Business Park, Wheatland Lane,  
Wallasey, Wirral, CH44 7ER